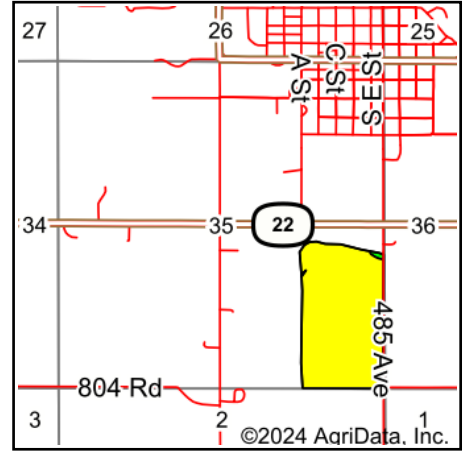
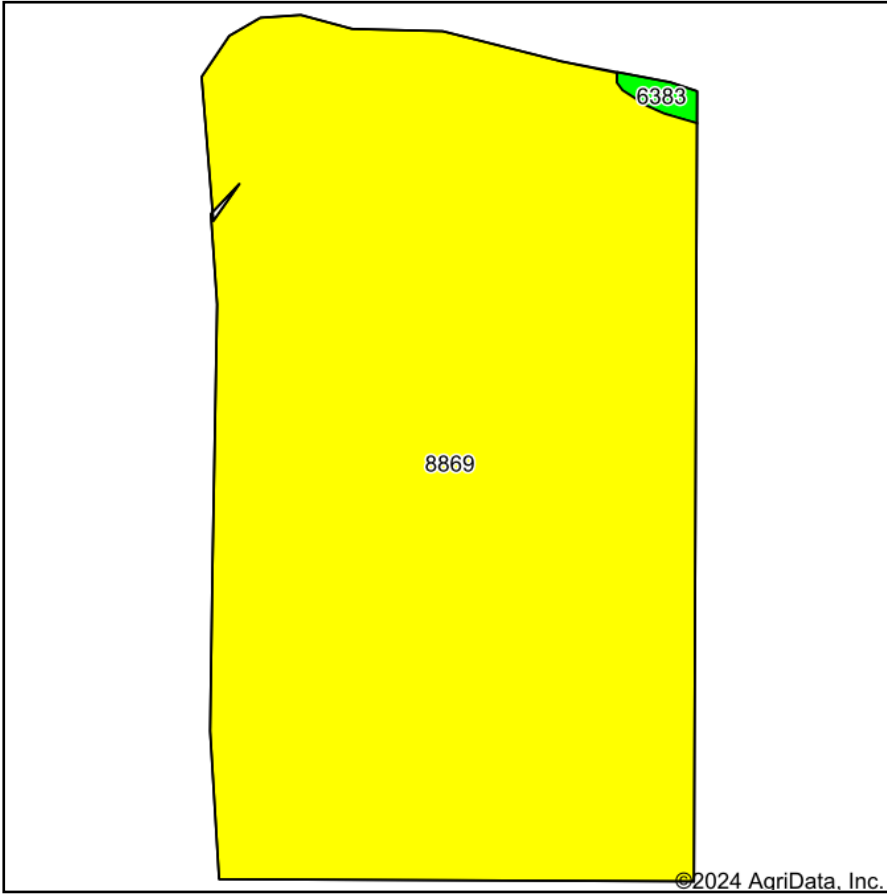


# Soils Map



State: **Nebraska**  
 County: **Valley**  
 Location: **35-18N-13W**  
 Township: **North Loup**  
 Acres: **69.94**  
 Date: **12/20/2024**



Maps Provided By:



Soils data provided by USDA and NRCS.

© AgriData, Inc. 2023

www.AgriDataInc.com

Area Symbol: NE175, Soil Area Version: 22

Code	Soil Description	Acres	Percent of field	Non-Irr Class Legend	Non-Irr Class *c	Irr Class *c	SRPG	Alfalfa hay Tons	Alfalfa hay Irrigated Tons	Corn Bu	Corn Irrigated Bu	Grain sorghum Bu	Grain sorghum Irrigated Bu	Winter wheat Bu	*n NCCPI Overall	*n NCCPI Corn	*n NCC Soybean
8869	Hord silt loam, 0 to 1 percent slopes	69.55	99.4%		llc	lw	73								74	52	
6383	Saltine-Leshara silt loams, occasionally flooded	0.39	0.6%		Vls		52	3	5	35	74	45	76	20	41	29	
<b>Weighted Average</b>					<b>2.02</b>	<b>*-</b>	<b>72.9</b>	<b>*-</b>	<b>*-</b>	<b>0.2</b>	<b>0.4</b>	<b>0.3</b>	<b>0.4</b>	<b>0.1</b>	<b>*n 73.8</b>	<b>*n 51.9</b>	<b>*n</b>

\*n: The aggregation method is "Weighted Average using all components"

\*c: Using Capabilities Class Dominant Condition Aggregation Method

\*- Irr Class weighted average cannot be calculated on the current soils data due to missing data.